



**Confidential and Proprietary**

## **Apriva Java Sample App Getting Started Guide**

**ECLIPSE**

**Document Version: 1.2**

Last Updated: December 24, 2014

This document is the Apriva Java Sample App Getting Started Guide for Eclipse Luna SR1.

### **Rights to the contents of this document**

Copyright © 2014 by APRIVA, LLC. All rights reserved. These materials are protected by the Copyright Act of 1976, as amended, as an unpublished work and the foregoing notice and legend shall not be deemed to constitute publication or intent to publish hereunder. These materials are proprietary and confidential information of APRIVA, and may not be disclosed and used only as authorized in the License Agreement and Confidentiality Agreement controlling such disclosure and use.

### **Modifications to the contents of this document**

APRIVA reserves the right, at any time and without notice, to change these materials or any of the functions, features or specifications of any of the software described herein. APRIVA shall have no warranty obligation with respect to these materials or the software described herein, except as provided in APRIVA's software license agreement with an authorized licensee.

### **Trademarks**

APRIVA ® is a registered trademark of APRIVA  
APRIVATalk™ is a trademark of APRIVA

### **Comments**

Please send your comments, questions, or suggestions about this document to:

Apriva, LLC  
ATTN: Apriva Integration Services  
8501 N. Scottsdale Road, Suite 110  
Scottsdale, AZ 85253  
(480) 421-1200  
integration@apriva.com

## OVERVIEW

Apriva Integration Services provide APIs and SDKs to securely connect your POS solutions to 35 North American payment processors on nearly any platform. Apriva is empowering developers to create applications that can sell anything, anywhere.

Apriva's proven technology has been rigorously tested and verified by the U.S. intelligence community, Department of Defense, and the leading organizations and standards bodies in the payments industry including Visa®, MasterCard®, and the PCI Security Standards Council. Apriva products have been unlocking the potential of mobile devices for more than a decade, and can provide Independent Software Vendors (ISVs) with unrivaled features and flexibility in payment processing.

Specific to POS solutions written in Java, Apriva offers the Apriva Java sample application to programmatically integrate with the Apriva Gateway™ using XML.

## APRIVADEVELOPER CERTIFICATE

Apriva first credentials you to access the Developer Portal, BackOffice™, and the development/testing environment of the Apriva Gateway. You then develop and test your integration in that environment, with Apriva providing integration support as needed.

Once your POS solution is fully-integrated and tested, you schedule Apriva Certification where Apriva sends you a connectivity script to test your connection and transaction processing. Upon successful certification testing, Apriva certifies your solution and grants you access to the production environment of the Apriva Gateway.

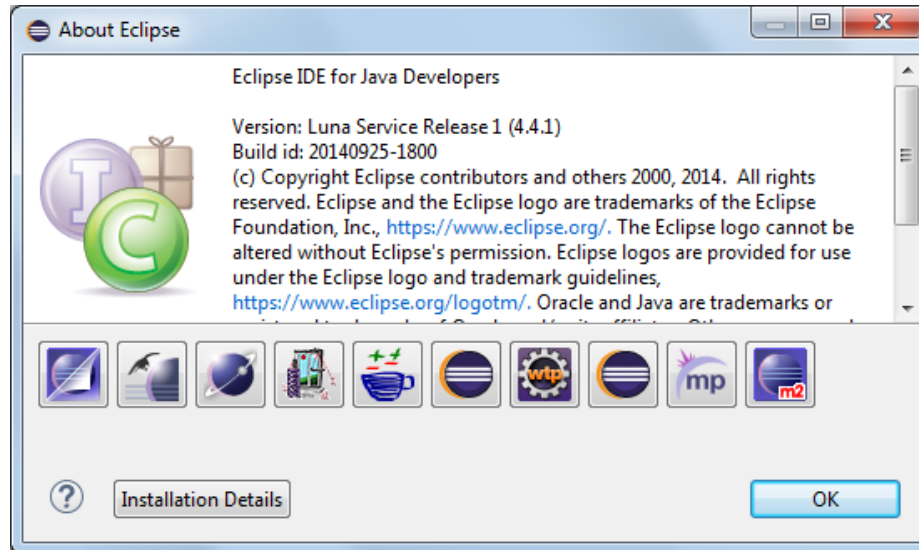
The Apriva Gateway requires a client certificate for accessing its end points. As part of the sample application, there is a development certificate that can be used to get familiar with the process. The Apriva Integration team will provide you with your own development certificate as part of the development environment credentials.

### **NOTE**

In the Java sample application, the AprivaDeveloper certificate is loaded automatically, so you need not take any additional steps to acquire this certificate.

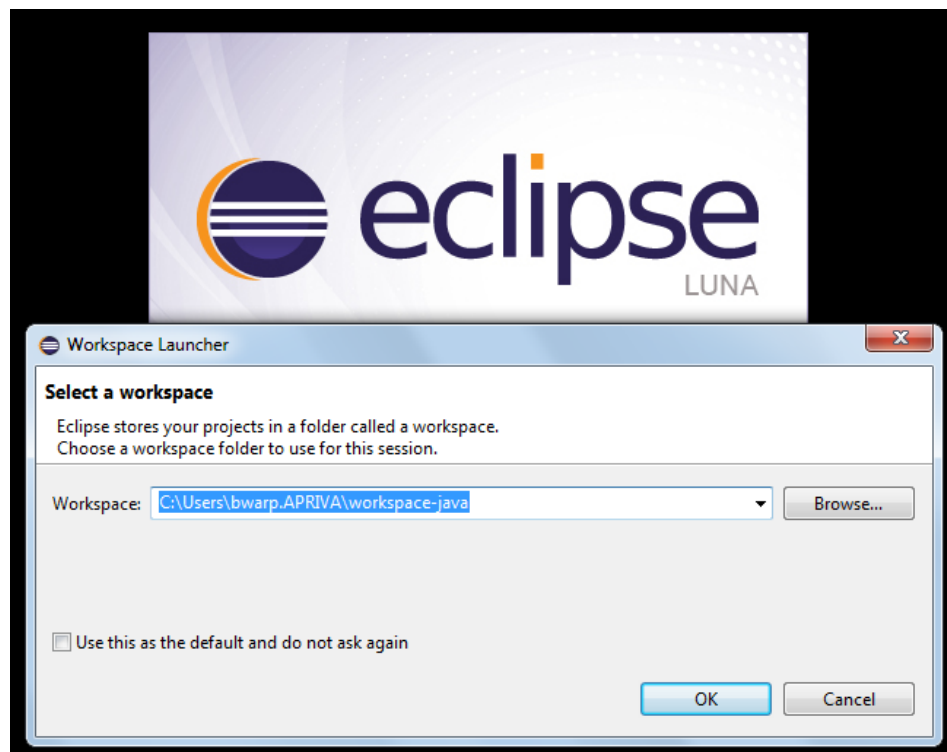
## OPEN AND EXECUTE THE JAVA APPLICATION IN ECLIPSE

The Java sample application showcases the Apriva Gateway API's features. For this example, we used the **Eclipse IDE, Luna Service Release 1**:

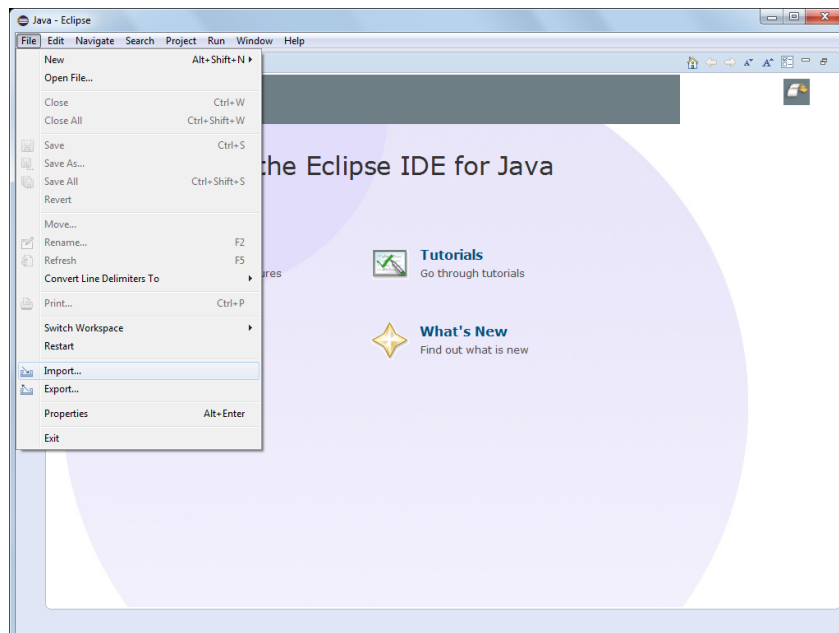


To launch the Java sample application, follow these steps:

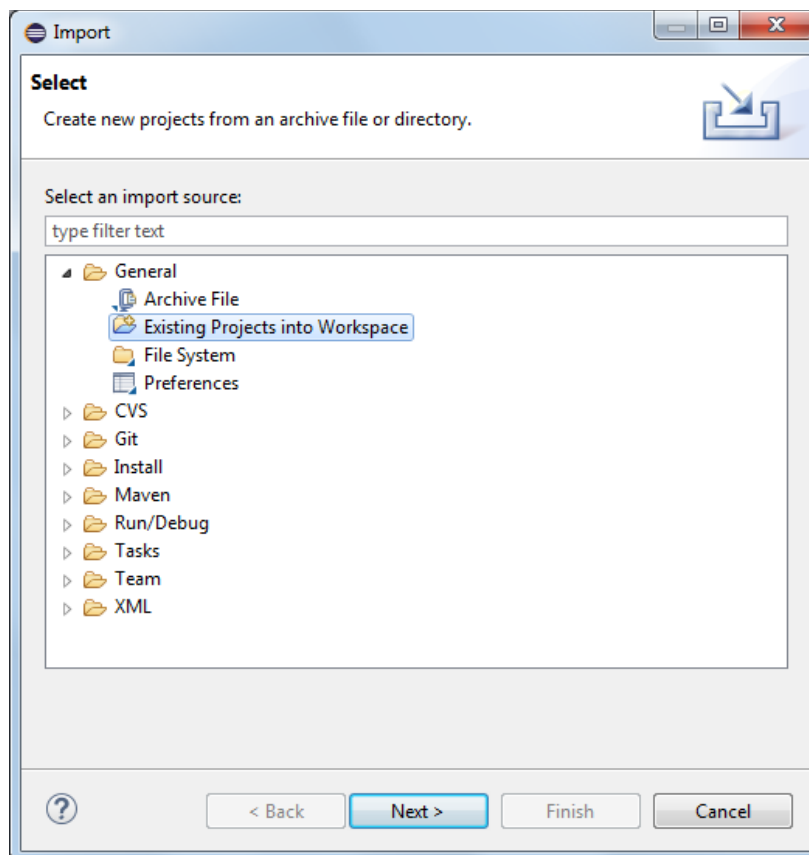
1. Start Eclipse. If the workspace Launcher window pops up, select a workspace. For this example we used "**workspace-java**". Click the **OK** button.



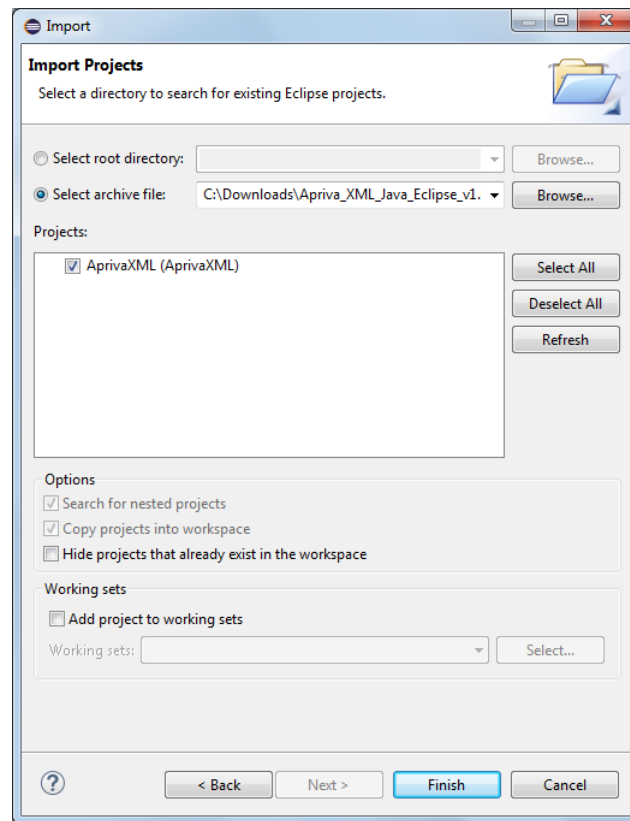
2. Select File → **Import...**



3. Expand "**General**", select "**Existing Projects into Workspace**", and click the **Next** button.



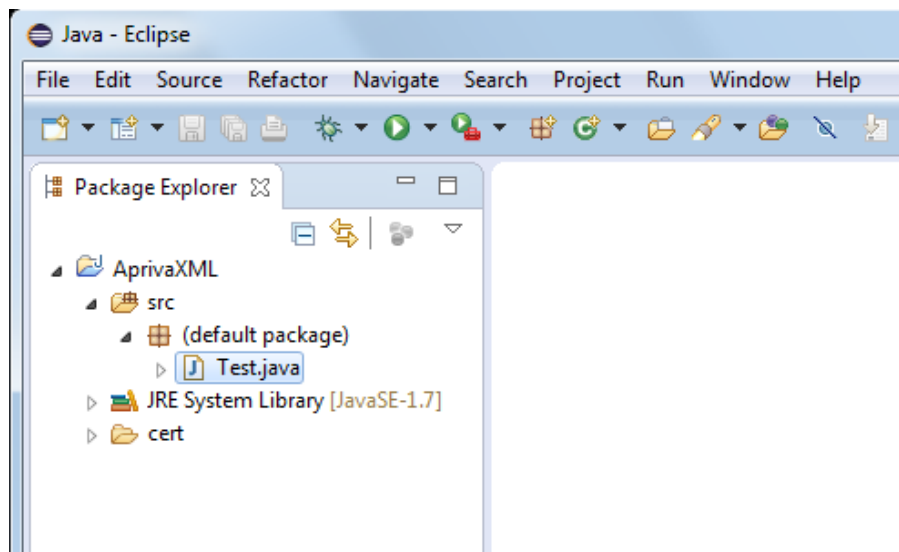
4. Select the **Select archive file** radio button . . .



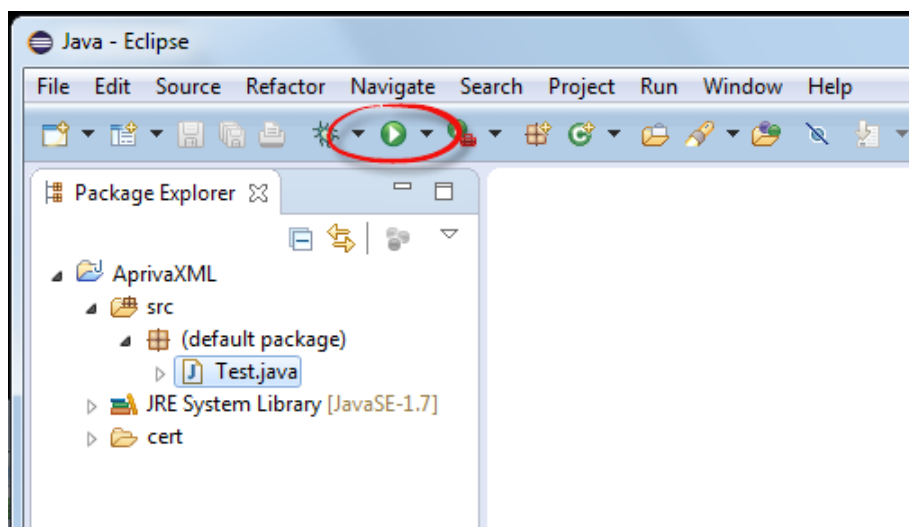
5. And browse to locate the "**Apriva\_XML\_Java\_Eclipse\_v1.0.zip**" archive, then click the **Finish** button. The project will be imported into the current workspace.
6. Close the "**Welcome**" Tab.



7. The "**Package Explorer**" view will now be displayed. Under this view, expand the "**AprivaXML**" folder, then expand the "**src**" folder, and the "**(default package)**":



8. Select the "**Test.java**" source file, then click the **Run** button to execute the code.



9. The console window will display the XML request and response.

